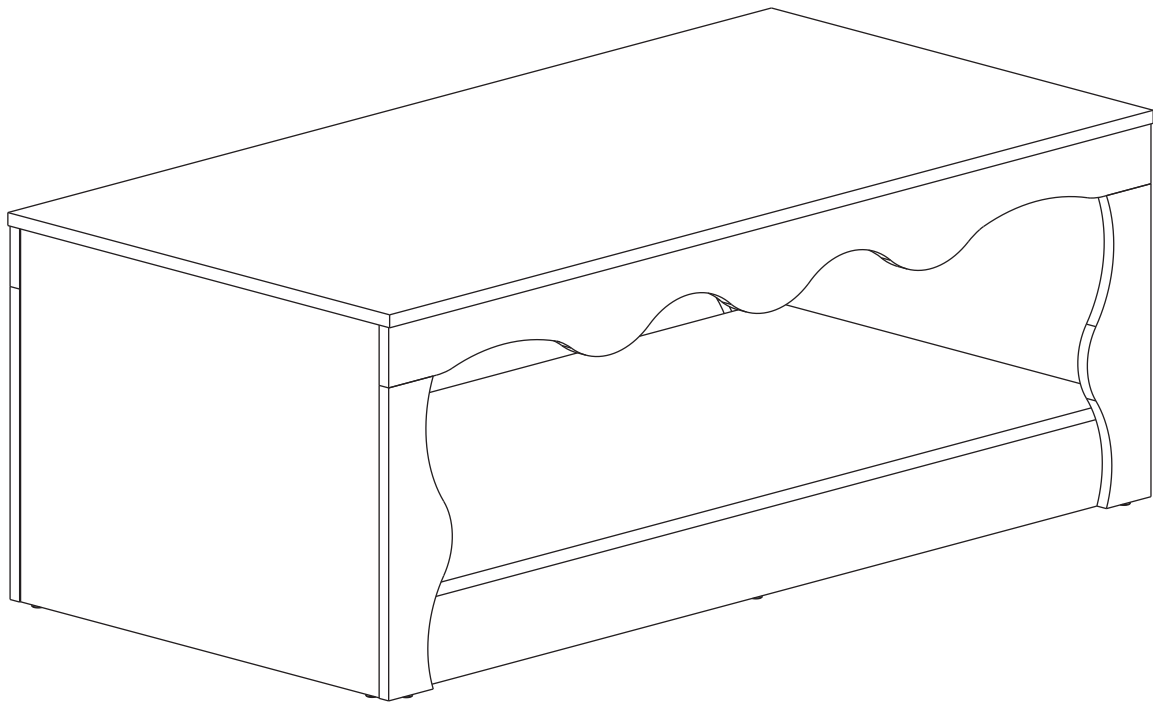




DESIGNED FOR LIFE

# Assembly Instructions



Coffee Table

Model No.  
HOGA-SL0025



LITTLE TREE  
Little Tree by Tribesigns

[www.tribesign.com](http://www.tribesign.com)

# Contact Us

## We're here to help you.



Your satisfaction is our top priority. If you encounter any issues with this product, such as missing or damaged parts, we're here to help. Please retain the original packaging and take photos of the packaging and the product, then contact us as soon as possible.


## Warm Tips

1. Carefully read these instructions and keep them for future reference.
2. Check the parts list and confirm everything's there before starting assembly.
3. When assembling, put all parts on a soft, smooth surface like a carpet to avoid scratches.
4. Don't fully tighten screws until all parts are confirmed in place to avoid misalignment.

## How to Get the Assembly Video

**Step 1**

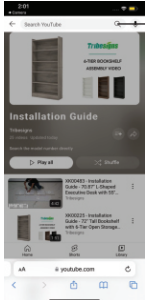
Scan the QR code.



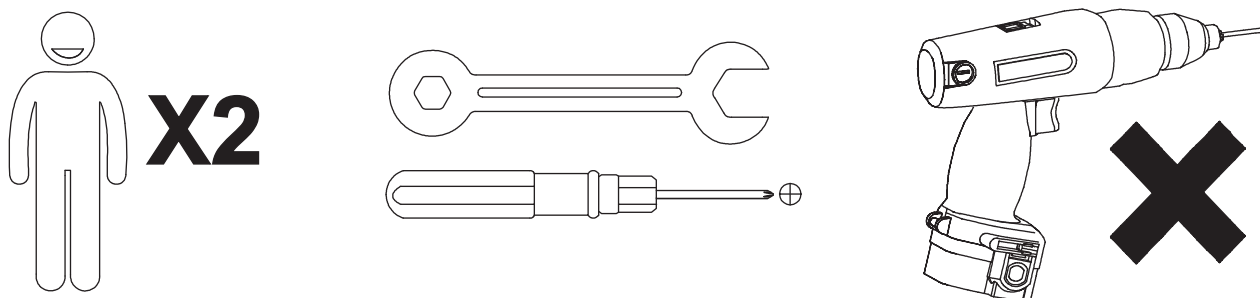
Installation Video

**Step2**

Search with the Model No.  
(on the bottom left corner of the title page)

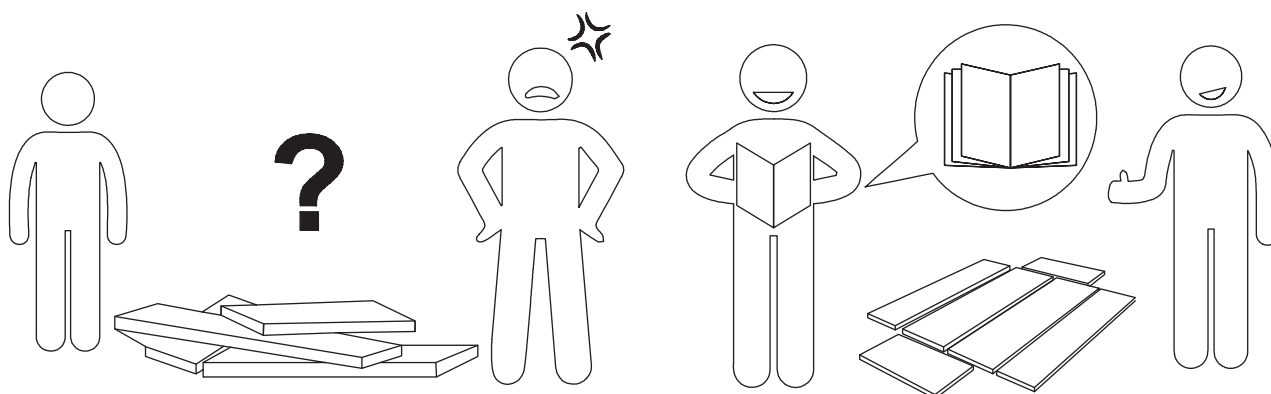


Note: If you can't find the assembly video, please contact us.



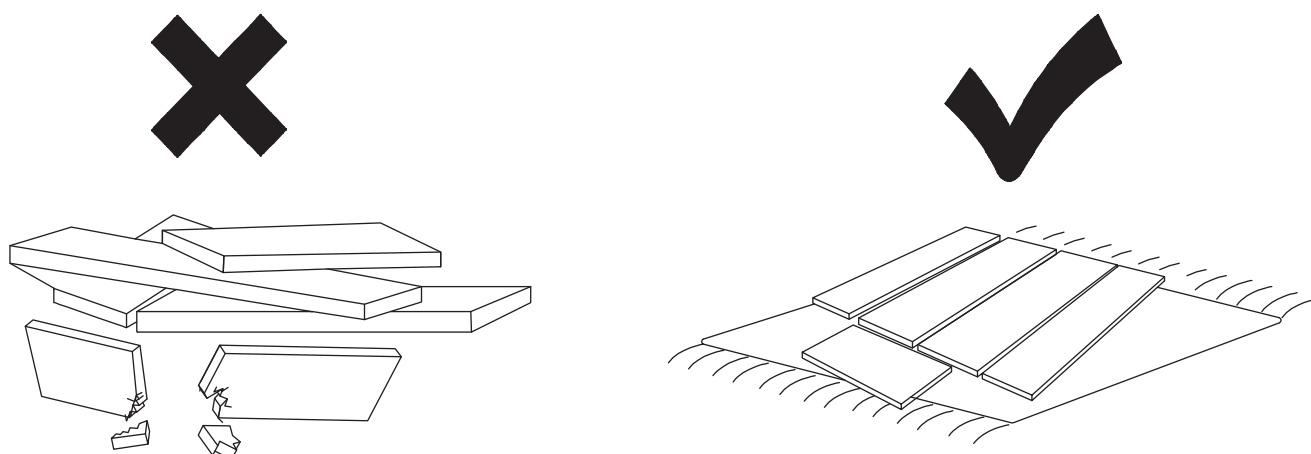
We recommend using hand tools for assembly.

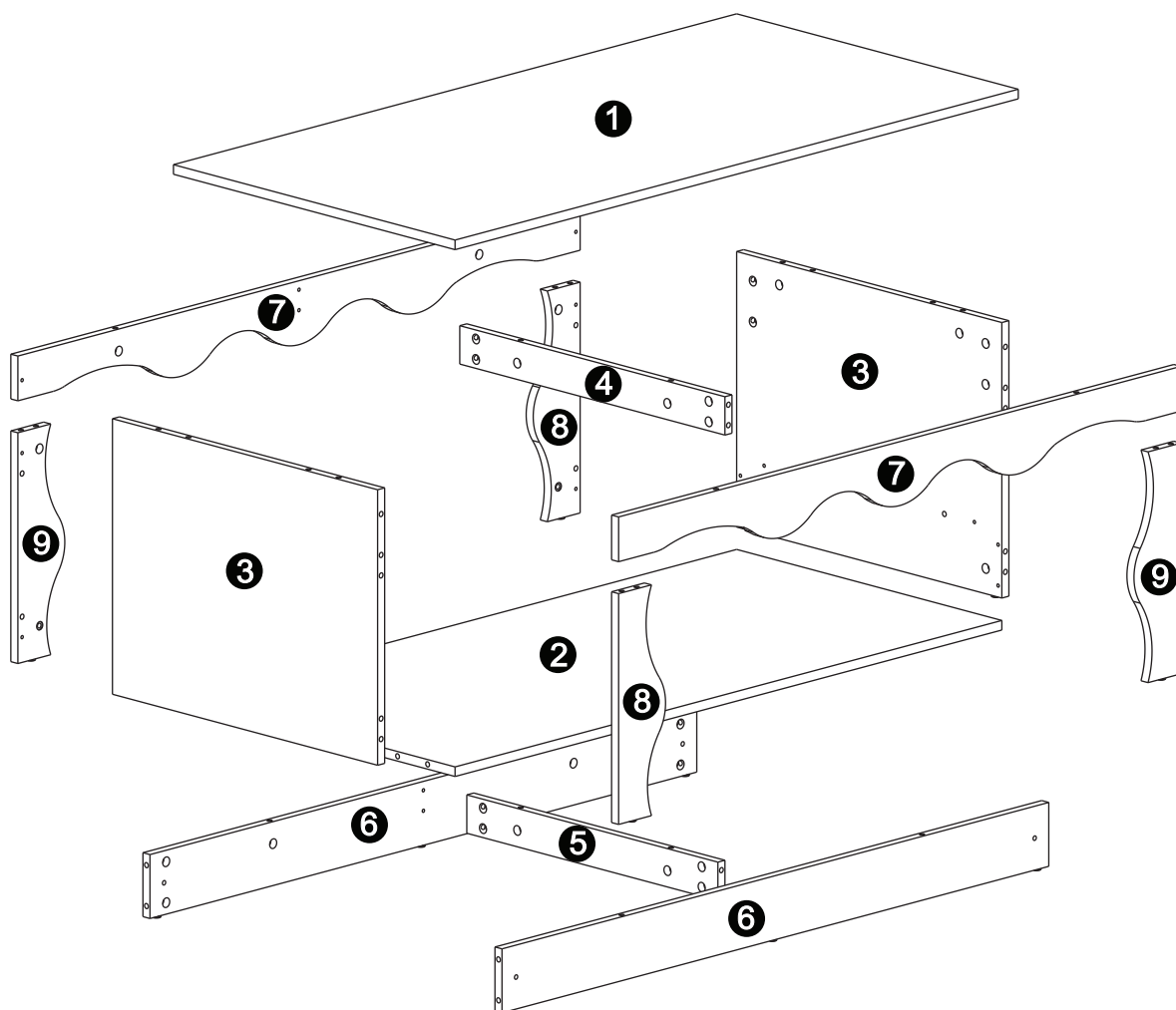
If an electric screwdriver is used, reduce power and torque to avoid damage to the product.



## AVOID SCRATCHES

In order to avoid scratching, this furniture should be assembled on a soft surface, such as a rug.



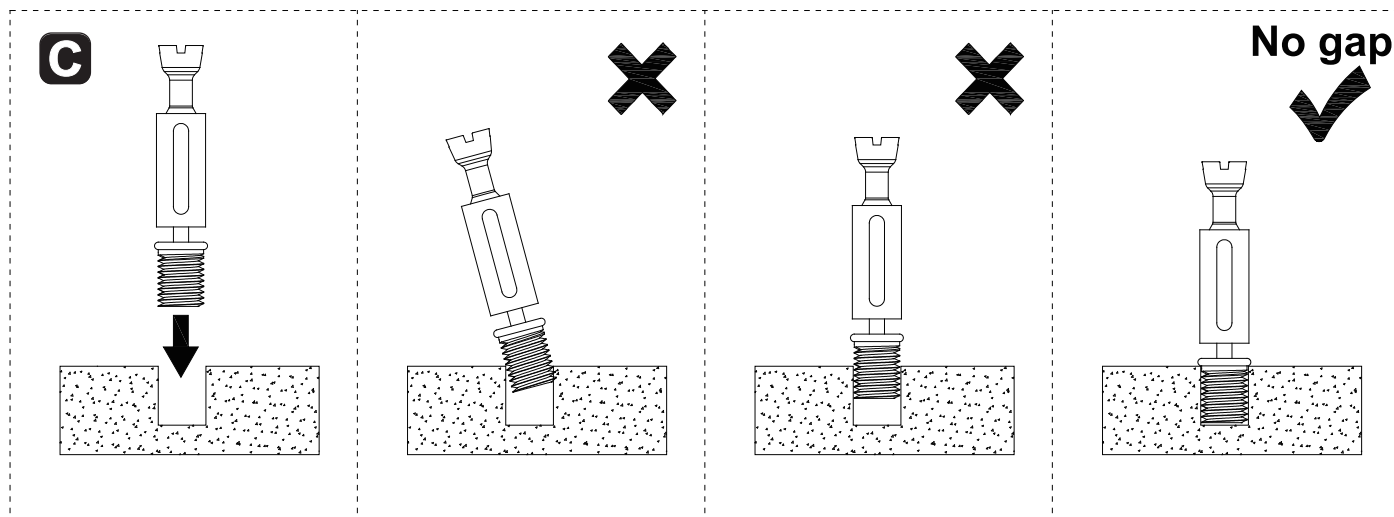


**⚠ Caution**

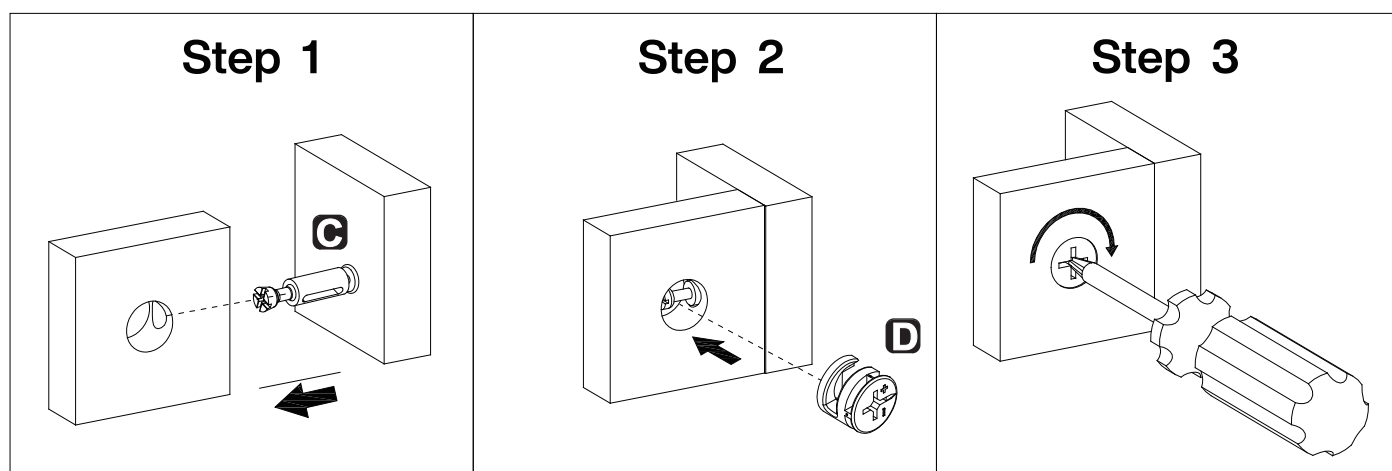
Make sure all parts are included. Most board parts are labeled or stamped on the raw edge. Contact us for a free replacement if you encounter any damaged or missing parts.

# Installation of Cams and Pins

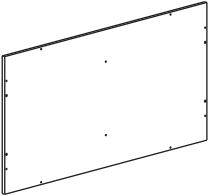
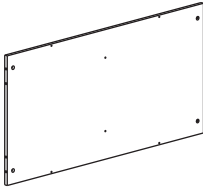
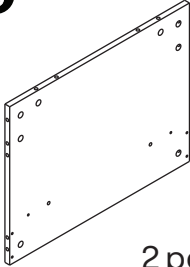
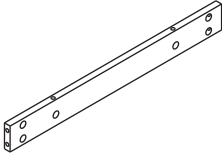
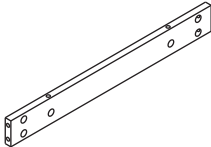
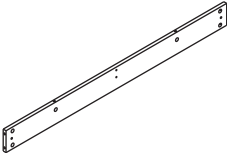
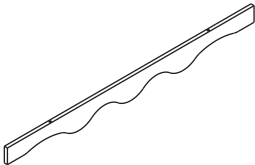


Read each step carefully before starting. Each step of instruction should be performed in the correct order. If these steps are not followed in sequence, assembly difficulties may occur.



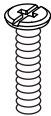



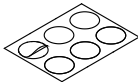

Screw the pin into the hole. Set the cams correctly by aligning the head of the cams with the lock pins. Lock the cam by turning the cam head with a screwdriver until it is tightened. Please do not use an electric screwdriver to assemble the unit.



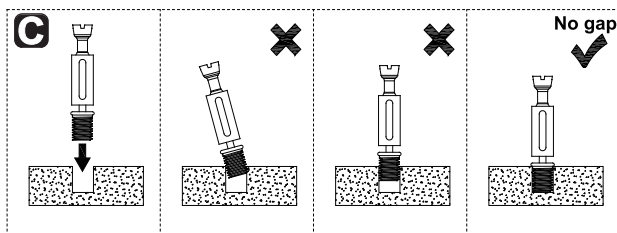
Parts List

<div>1</div> <div></div> <div>1 pc</div>	<div>2</div> <div></div> <div>1 pc</div>	<div>3</div> <div></div> <div>2 pcs</div>	<div>4</div> <div></div> <div>1 pc</div>	<div>5</div> <div></div> <div>1 pc</div>
<div>6</div> <div></div> <div>2 pcs</div>	<div>7</div> <div></div> <div>2 pcs</div>	<div>8</div> <div></div> <div>2 pcs</div>	<div>9</div> <div></div> <div>2 pcs</div>	

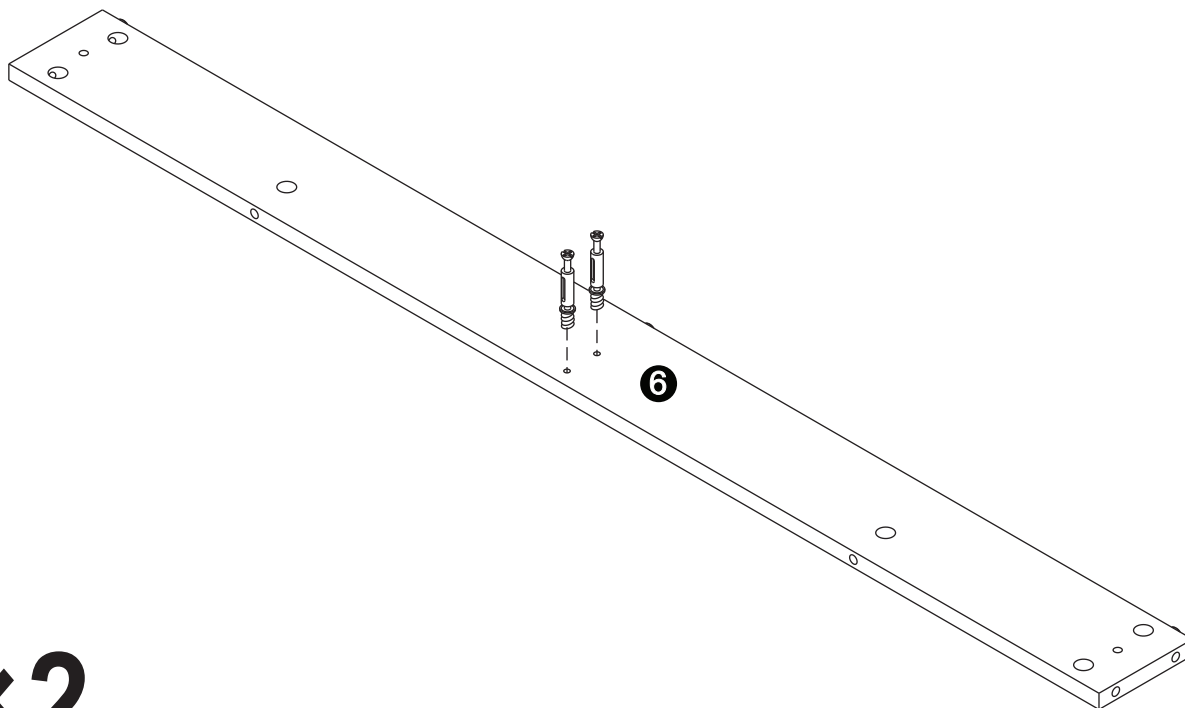
Hardware List

A	B	C	D	E	F
					
M6×25mm	Ø8×30mm	M6×44.5mm	Ø15mm	Ø21mm	
4 pcs	20 pcs	52 pcs	52 pcs	8 pcs	1 pc

**1**

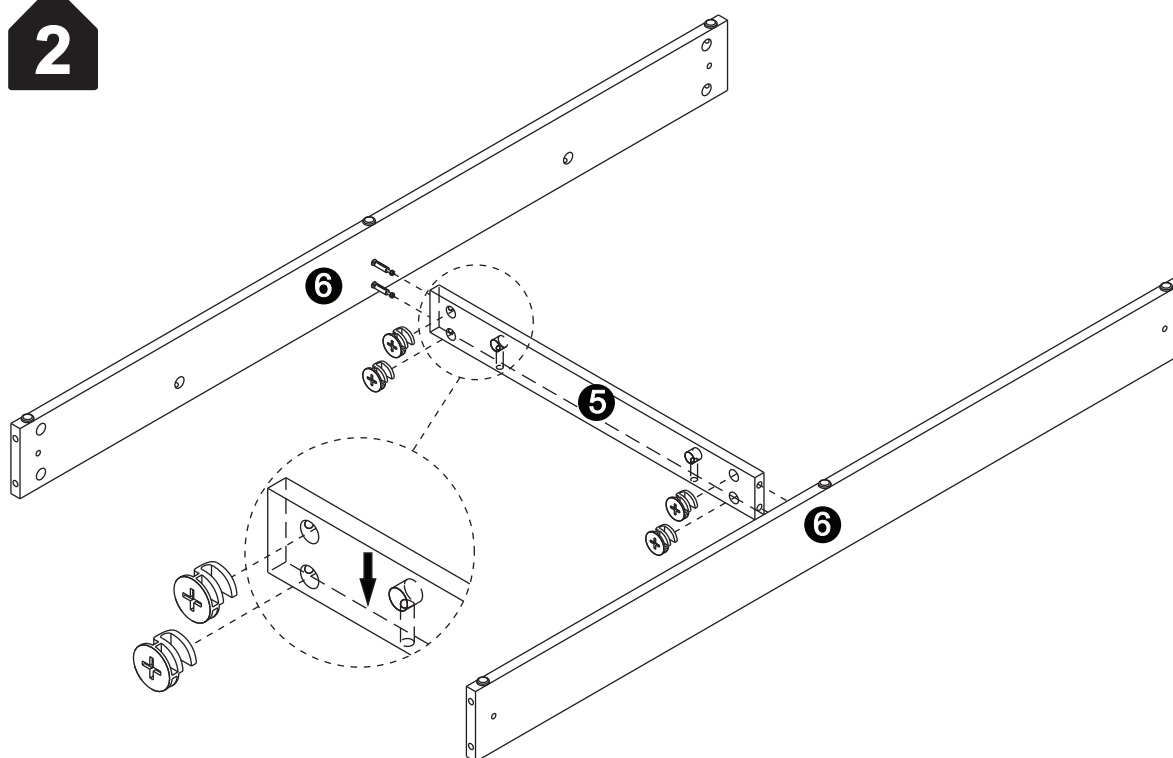


C
M6×44.5mm
4 pcs

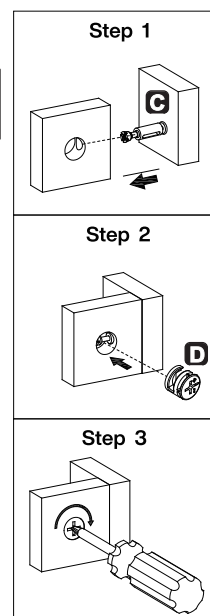


**×2**

**2**

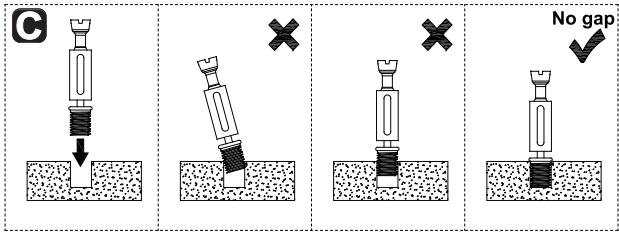




D
Ø15mm
4 pcs

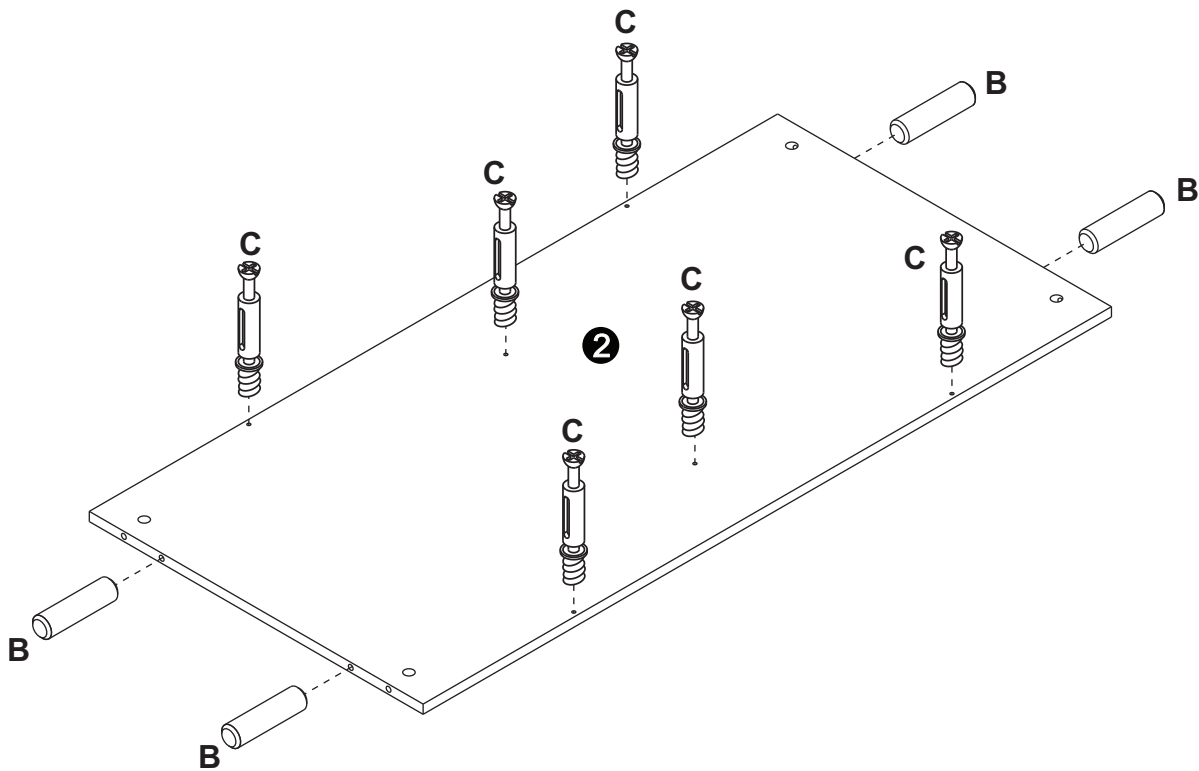




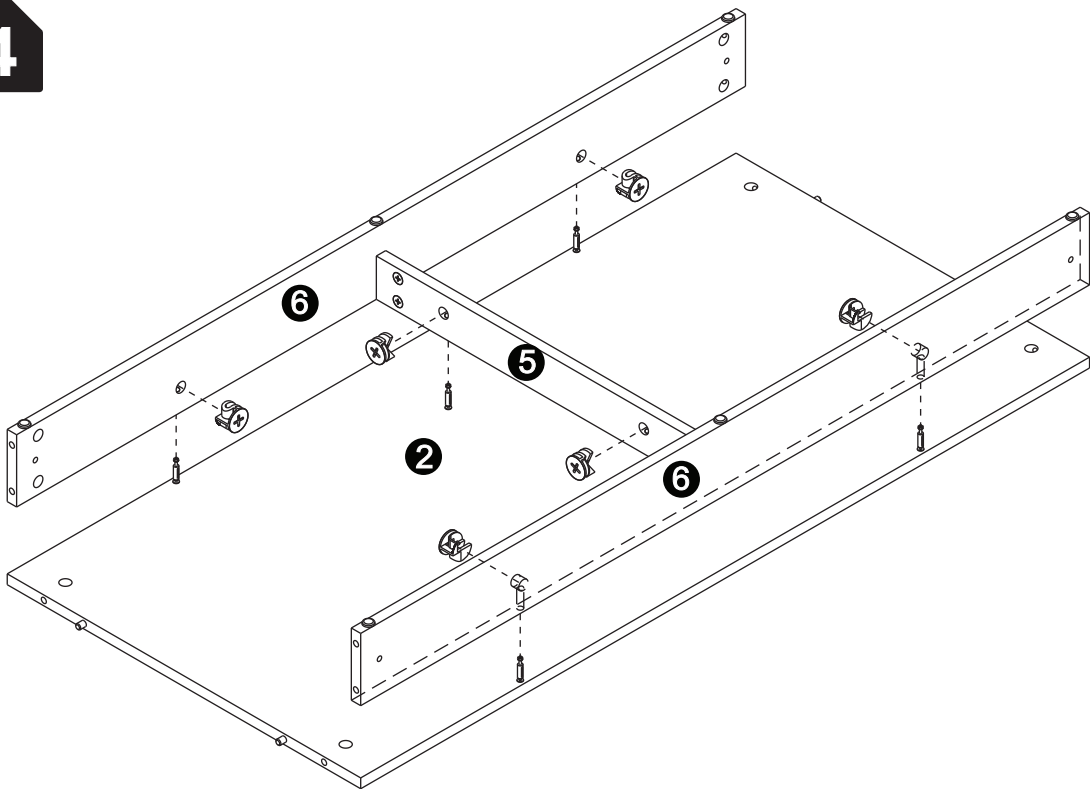
3




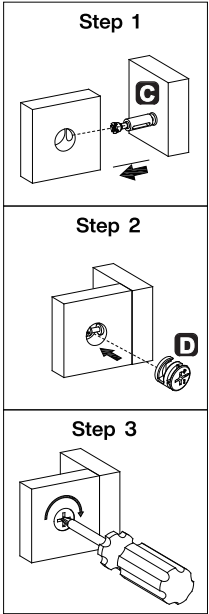
B	C
	
Ø8×30mm	M6×44.5mm
4 pcs	6 pcs



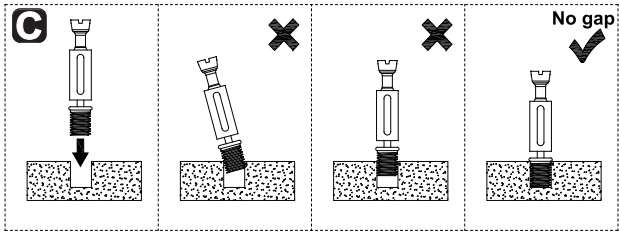
4




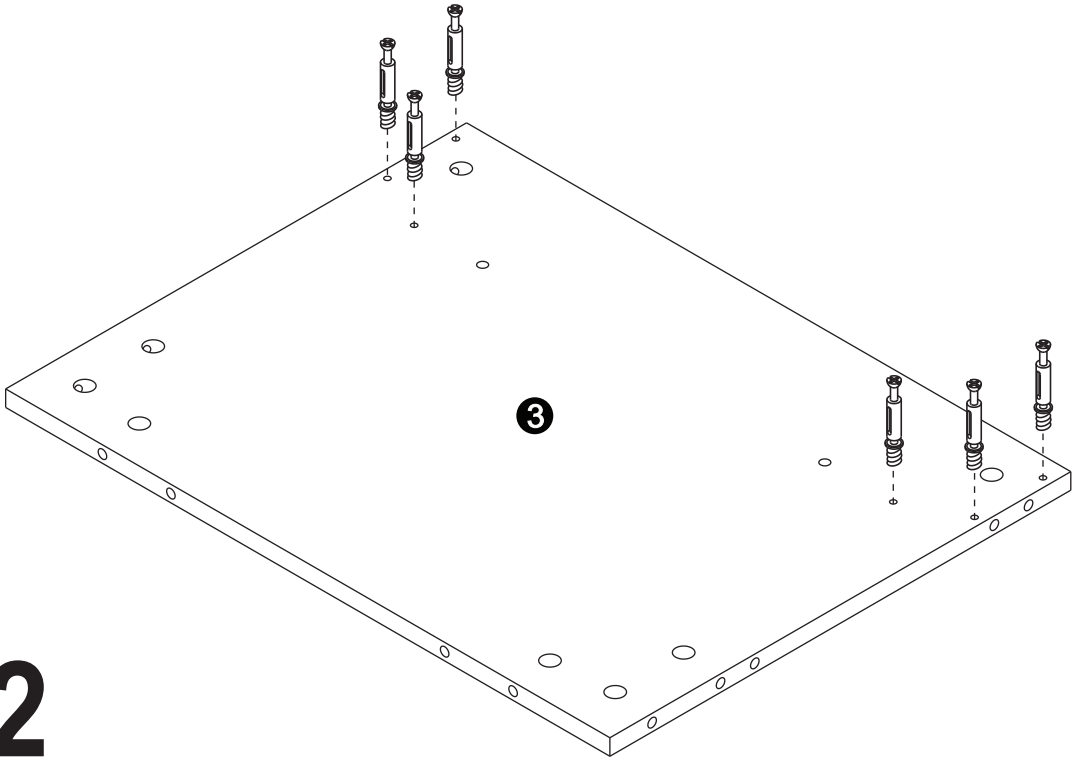
D

Ø15mm
6 pcs



5




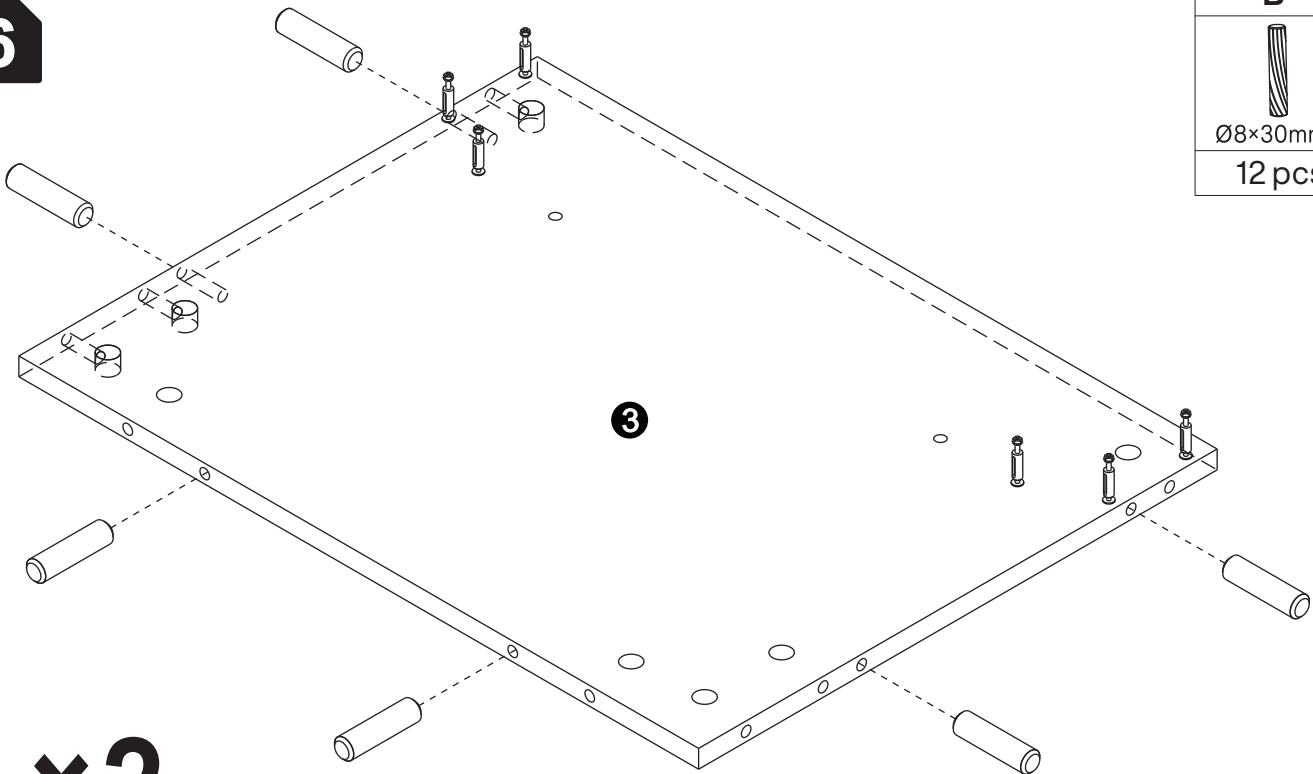
C

M6×44.5mm
12 pcs



×2

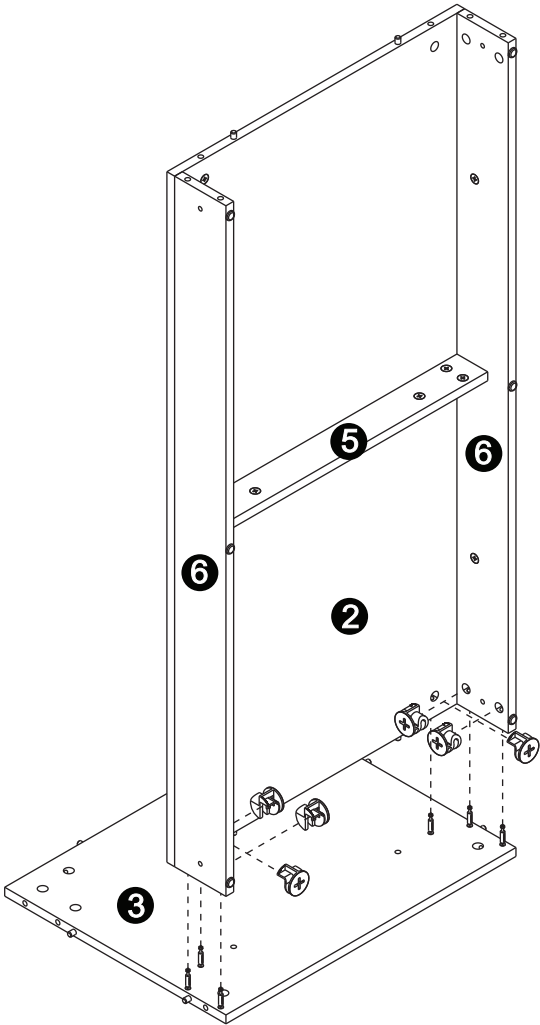
6


B

Ø8×30mm
12 pcs



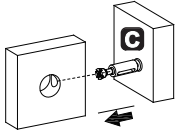
×2

7

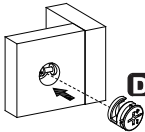


D

Ø15mm
6 pcs

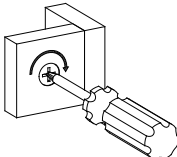
Step 1



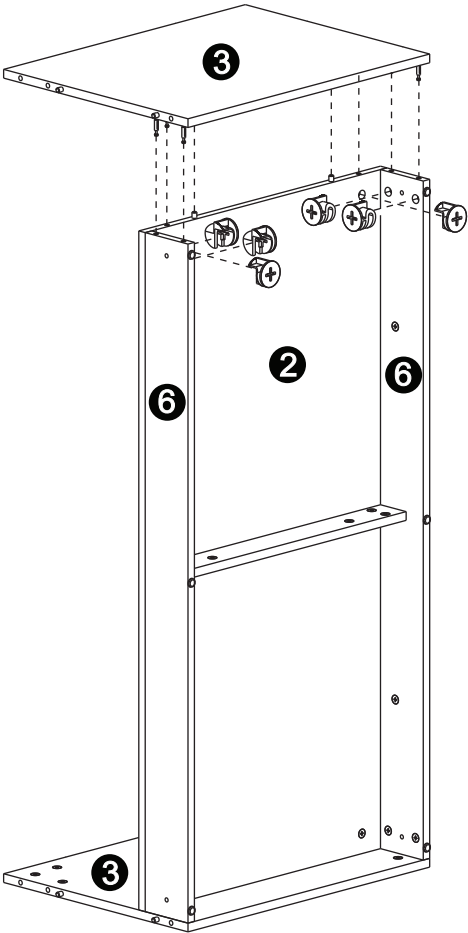
Step 2




Step 3

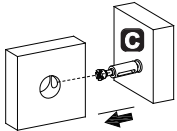


8

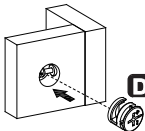


D

Ø15mm
6 pcs

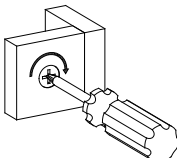
Step 1



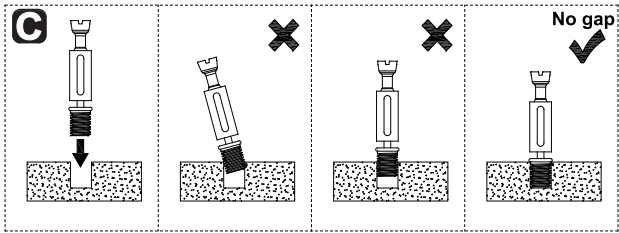
Step 2





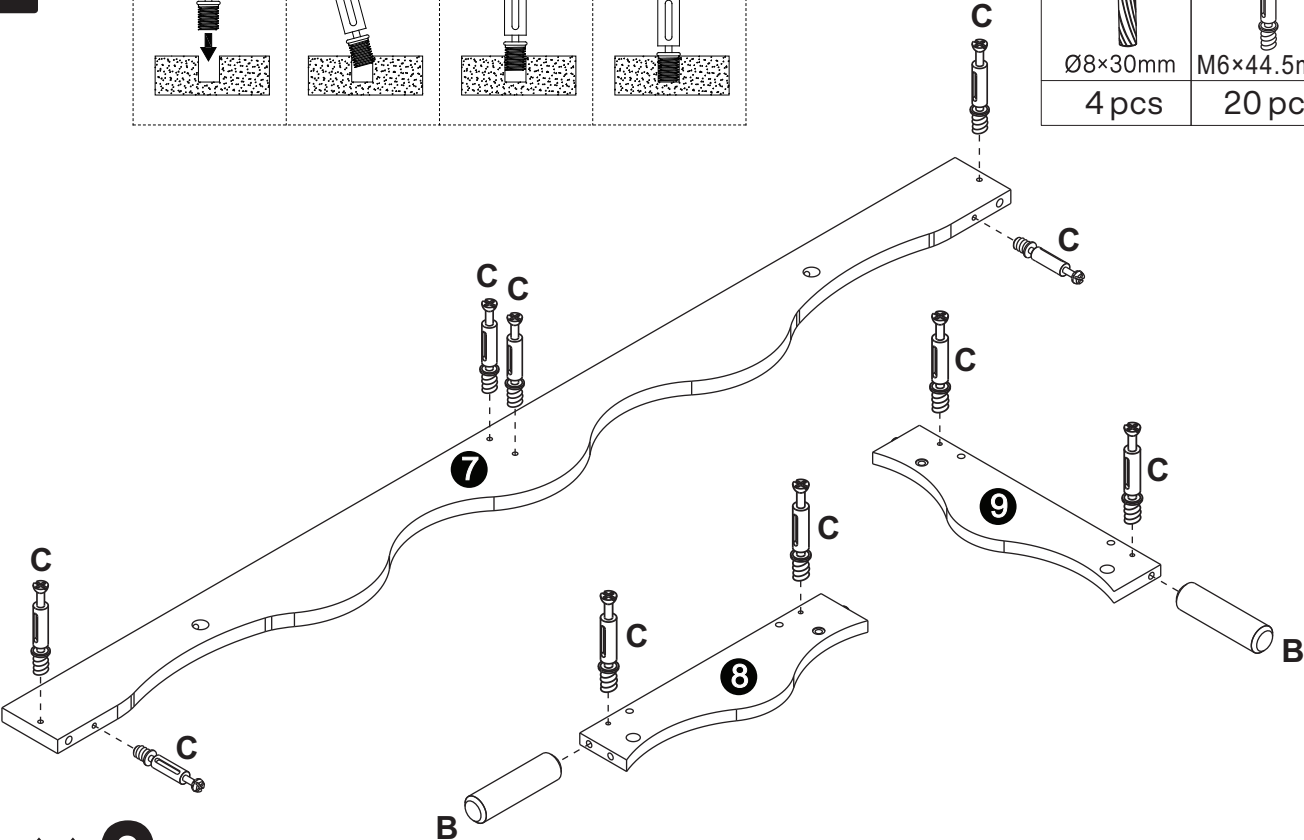
Step 3



9

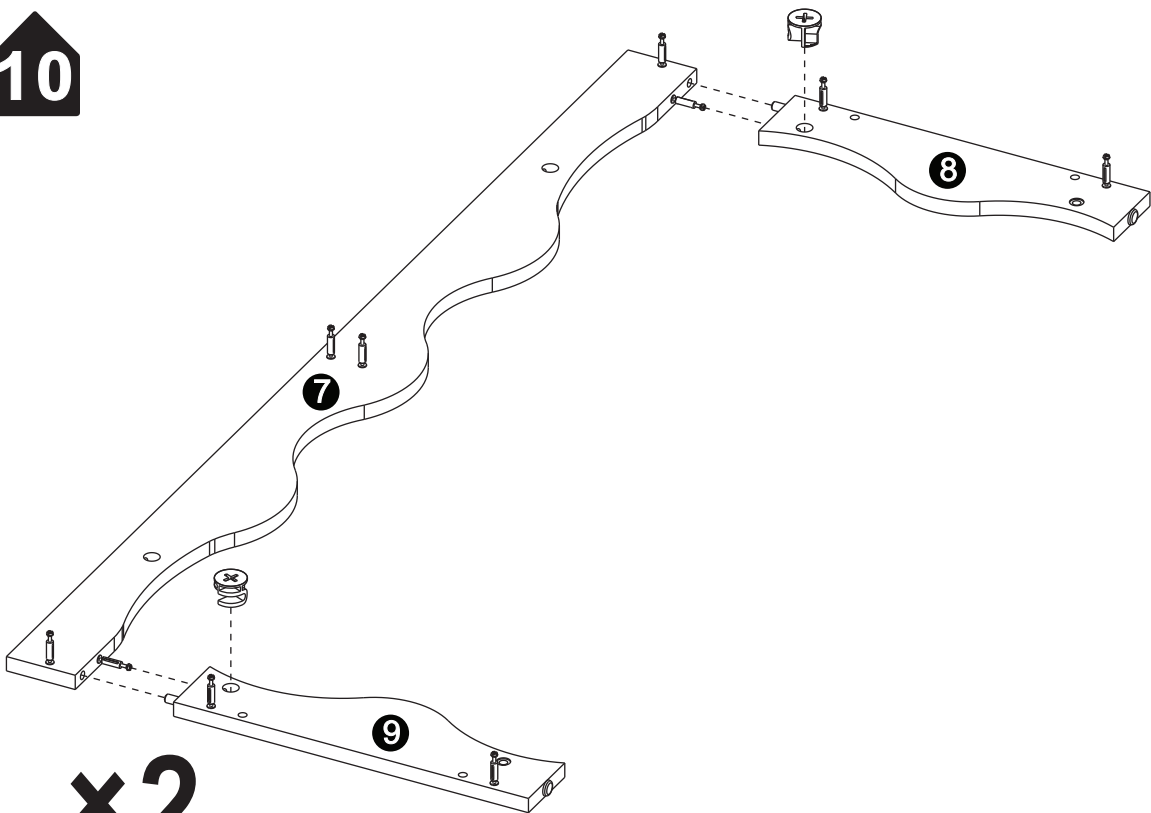


B	C
	
Ø8×30mm	M6×44.5mm
4 pcs	20 pcs




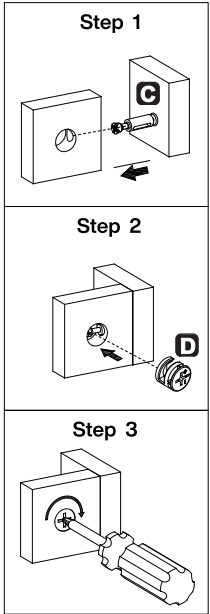
x2

10

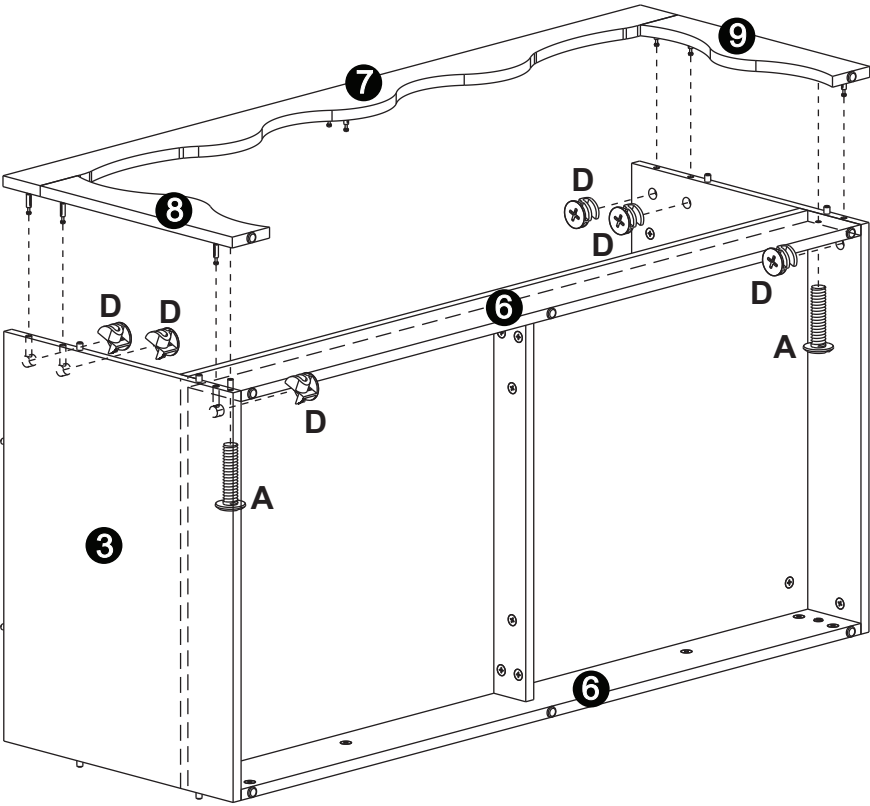


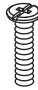

x2

D

Ø15mm
4 pcs

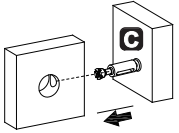


11

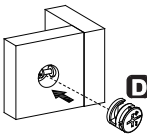


A	D
	
M6×25mm	Ø15mm
2 pcs	6 pcs

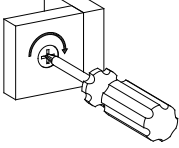
Step 1



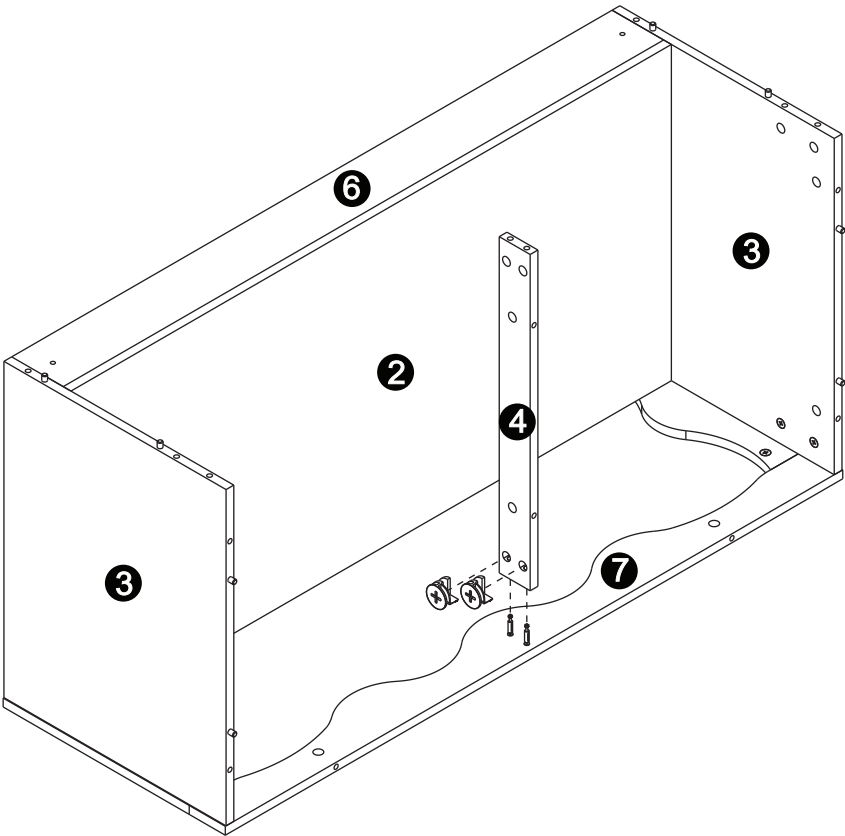
Step 2




Step 3

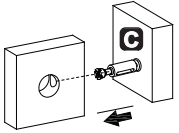


12

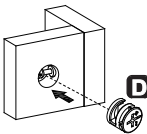


D

Ø15mm
2 pcs

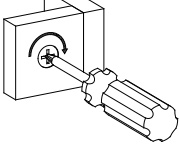
Step 1



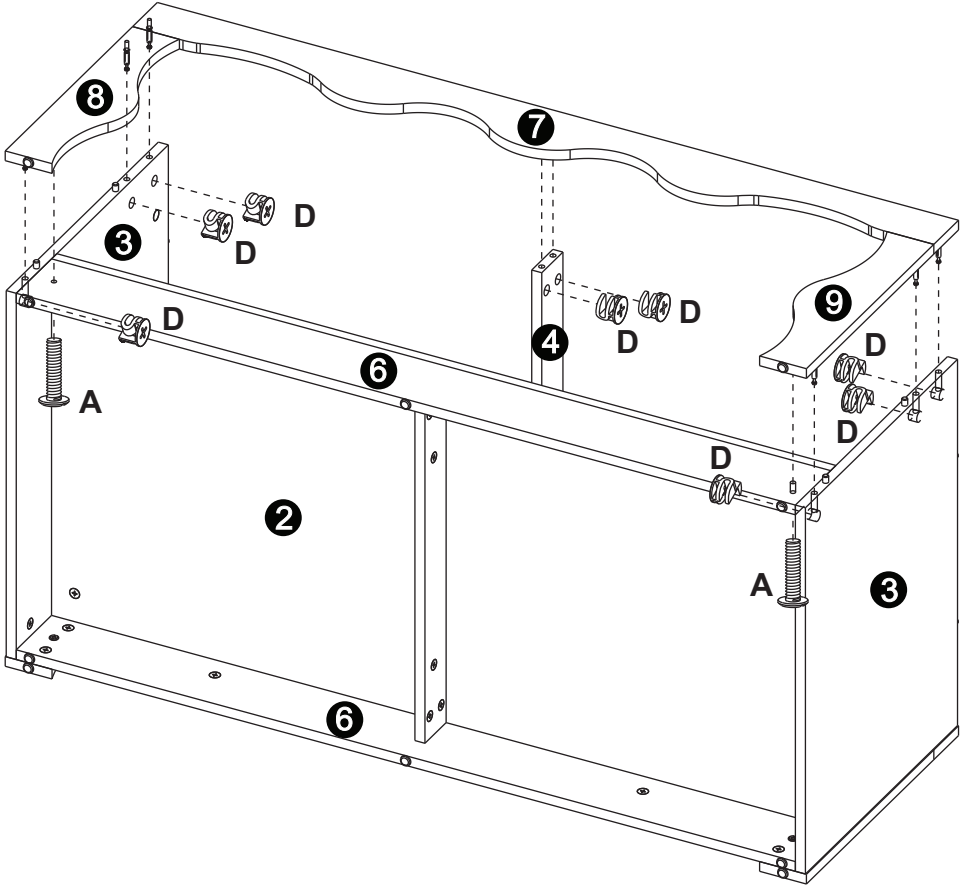
Step 2

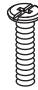



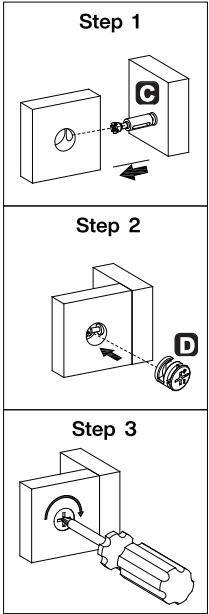
Step 3



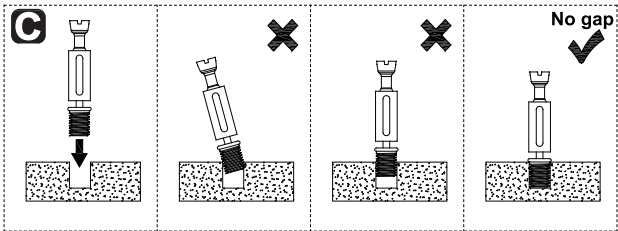
13




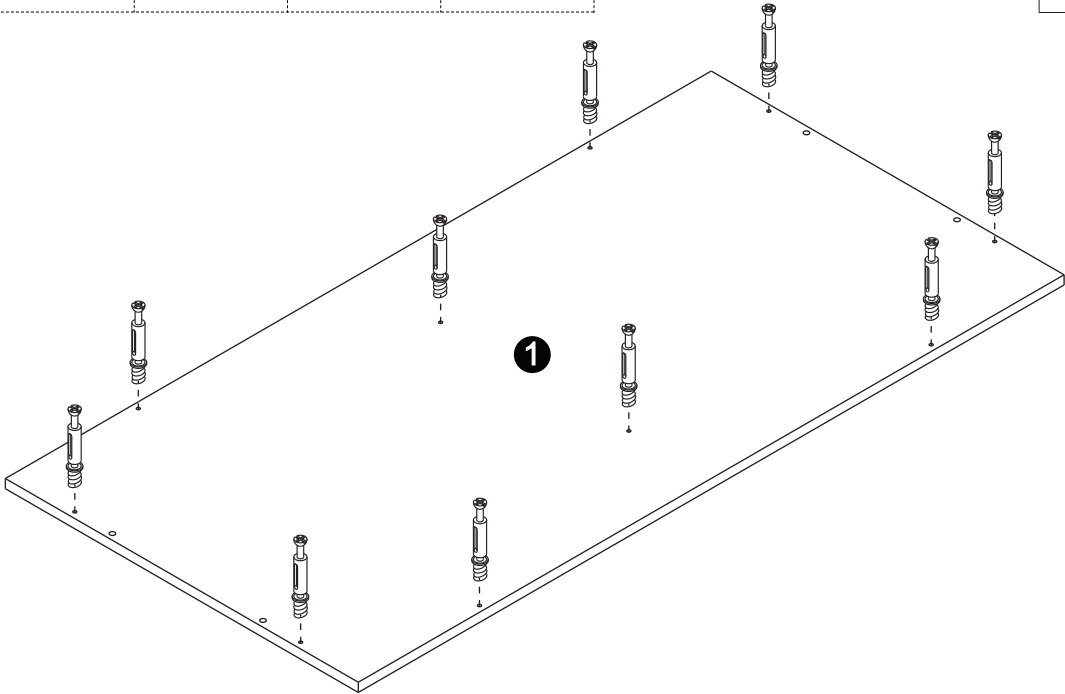
A	D
	
M6×25mm	Ø15mm
2 pcs	8 pcs



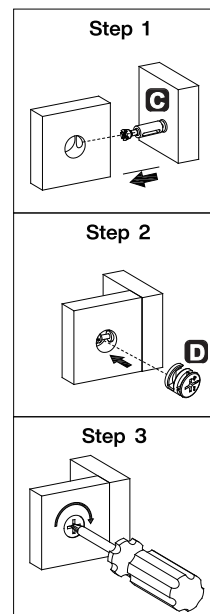
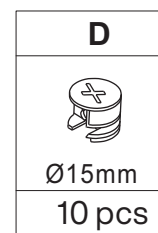
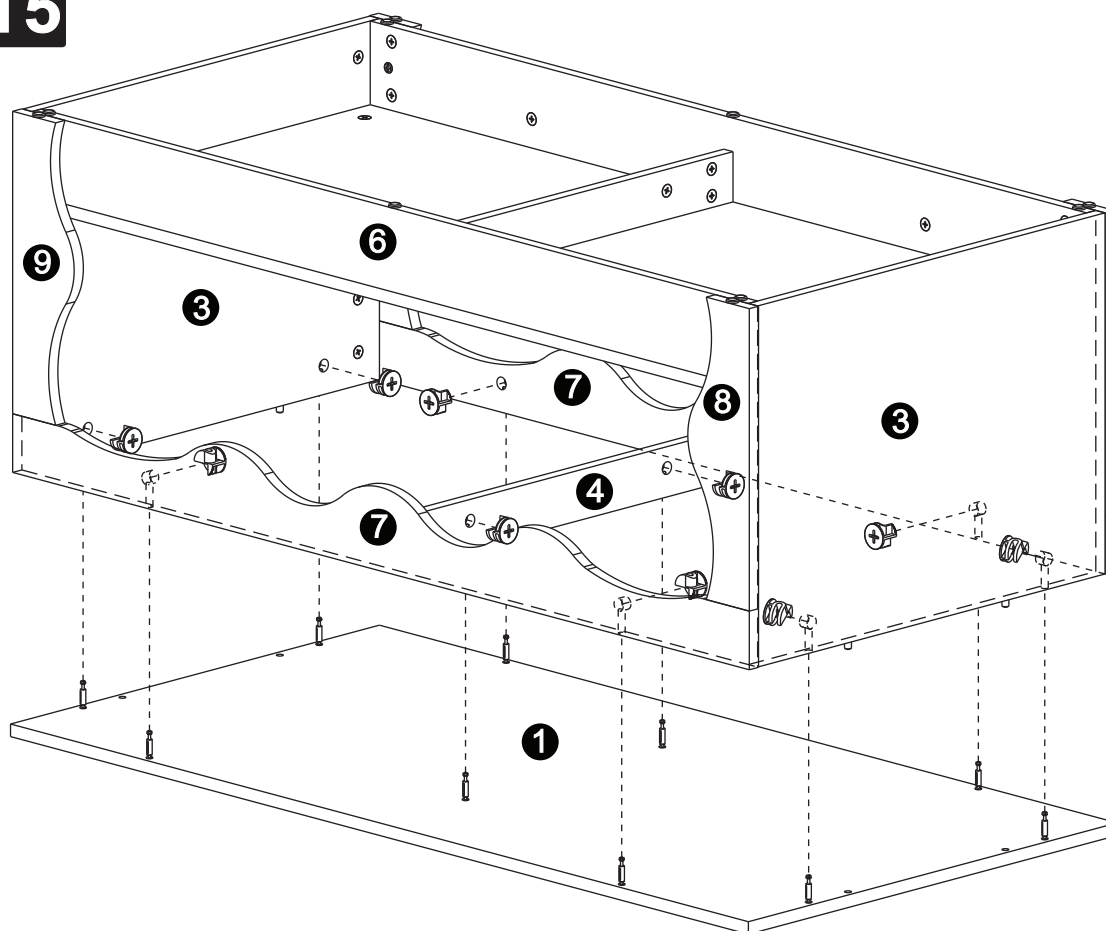
14



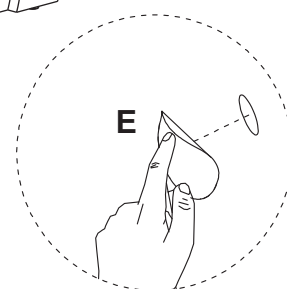
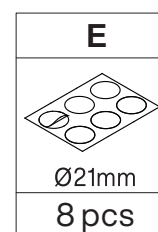
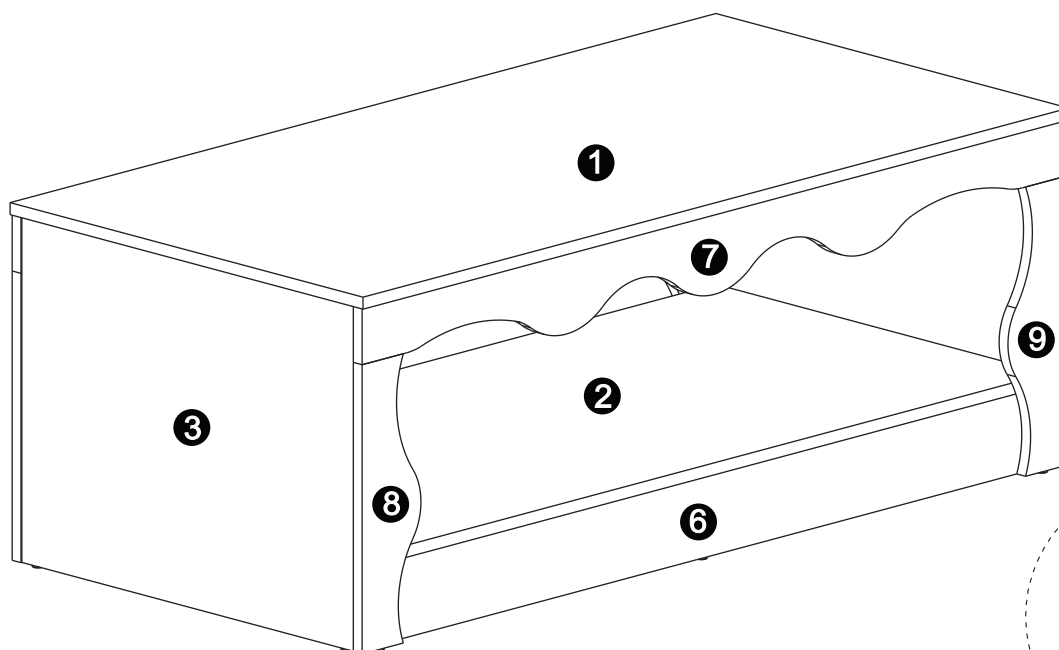
C

M6×44.5mm
10 pcs



**15**



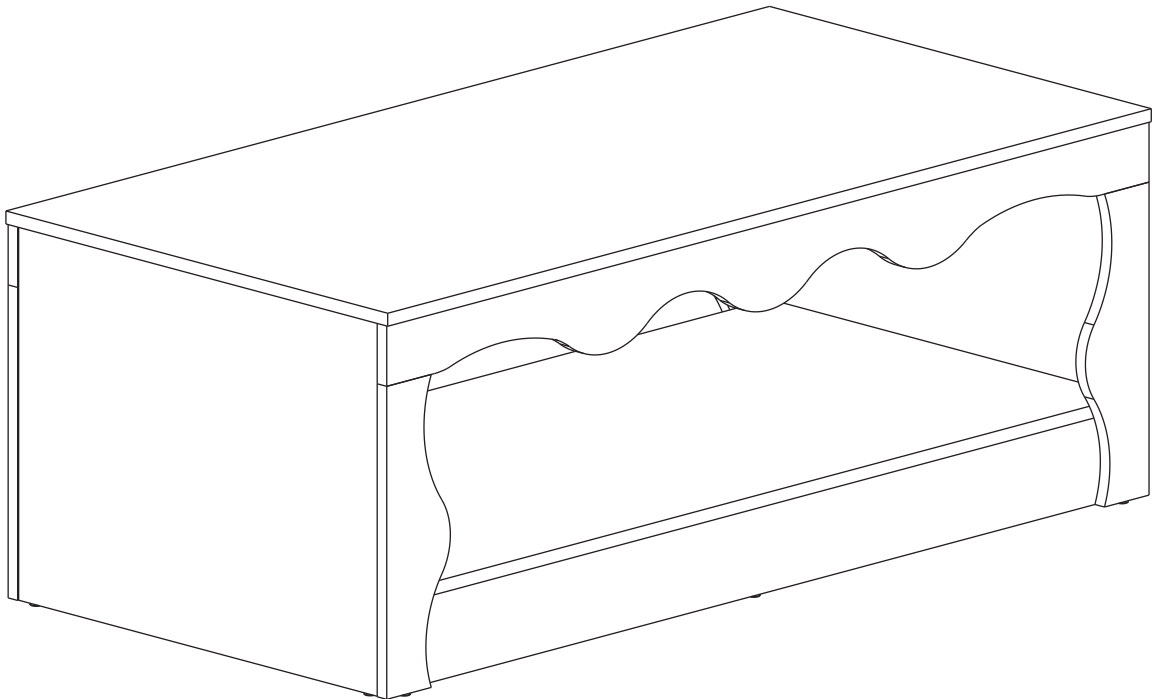
**16**





DESIGNED FOR LIFE

# Thank you for your support!



## Contact our customer service team



[support@tribesigns.com](mailto:support@tribesigns.com)  
[www.tribesigns.com](http://www.tribesigns.com)



**1-424-220-6888**

Contact us anytime except  
12:00 AM to 8:00 AM EST.

## Follow Tribesigns



Facebook



Instagram



Pinterest



Twitter



YouTube



TikTok



WhatsApp